

WEST SUSSEX COUNTY COUNCIL
(CHICHESTER: PUBLIC FOOTPATH NO. 184/1)
(TEMPORARY CLOSURE) ORDER 2025

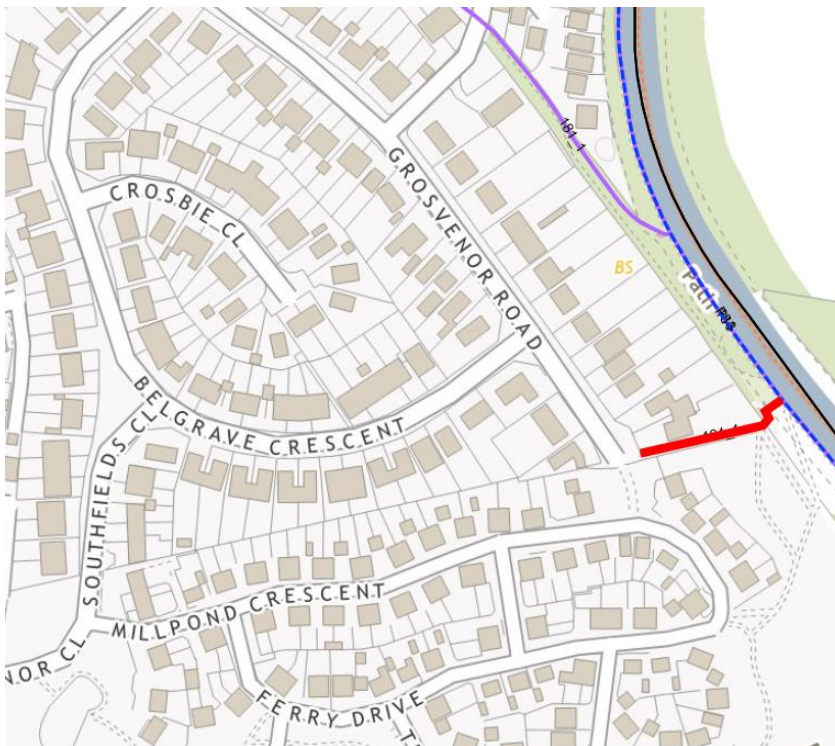
NOTICE is hereby given that West Sussex County Council made an Order under the Road Traffic Regulation Act 1984, the effect of which will be to prohibit any person from proceeding along the section of Public Footpath No. 184/1 from its western end (485782, 103249) eastwards towards the canal footpath (485939, 103276), a distance of approximately 82 metres.

The Order is necessary to protect public safety due to gas replacement works. The Order will come into effect on 11 March 2025 and will last for 6 months. It is expected the works will be completed by 4 April 2025.

Diversion signage will be in place for pedestrians directing them onto the parallel Chichester Canal Tow path to pass the works site.

Any queries about the works taking place or the effect of the Order on persons using the footpath should be directed to Rights of Way Team, WSCC, telephone number 01243 777620.

Dated 6th March 2025
Director of Law & Assurance
County Hall,
Chichester.



SCALE
1:2000

© Crown copyright and database rights 2024 OS AC0000849983. You are permitted to use this data solely to enable you to respond to, or interact with, the organisation that provided you with the data. You are not permitted to copy, sub-license, distribute or sell any of this data to third parties in any form.

(c) Crown copyright All rights reserved. WSCC Licence number AC0000849983



Public Footpath Route Temporarily Closed
Public Bridleway

Public Rights of Way, 1st Floor Northleigh, Tower Street,
Chichester, West Sussex, PO19 1RH;
www.westsussex.gov.uk/prow